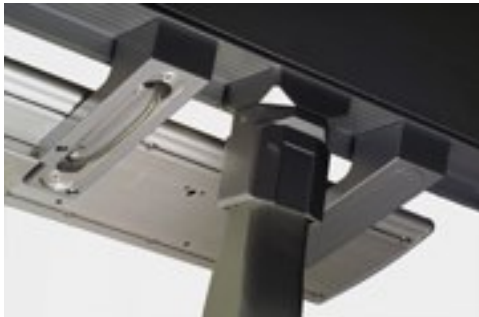


## KVS-E90-Pult - Desk Keyboard Stainless Steel

With integrated trackball especially for cramped application areas and variable installation



### Description



This KVS-E90 keyboard has an integrated [Trackball](#) with 2 keys instead of the NUM-block. This saves a lot of space and the trackball is close to the rest of the keyboard. The input device is especially applicable for internet terminals or for cramped applications. Due to the desk kit the KVS-E90 can be mounted variably.

The desk kit for mounting the bolts can be ordered separately. The input device can easily be adapted at terminals or integrated in different application areas.

Like the other keyboards of the KVS-E series this keyboard is water- and dust proof to IP65 and has a good tactile feel due to the raised keycaps. Especially applicable for internet terminals.

### Features

- Variable mounting due to the separate desk kit
- Water- and dust proof to DIN IP 65
- Especially applicable for internet terminals or cramped application areas
- Long-travel keys allow a comfortable data input
- With [PS/2](#) interface

For further information you can go to the [main page of the KVS-E Series](#) of this keyboard range.

**Specification**Stainless steel keyboard desk version with integrated [Trackball](#)**Mechanical data**

Housing:	High-Grade Steel
Degree of Protection:	IP65
Dimensions:	483,2 x 171,6 x 36,7 mm
Cable Length:	180 cm

**Keys**

Operational Life:	10 mio. keystrokes min.
Stroke Force:	0,9 ± 0,1 N
Stroke Travel:	1,6 ± 0,1 mm
Key Legend:	Laser

**Electric Data**

Interface:	<a href="#">PS/2</a>
Additional Interface:	for mouse PS/2

**Environment**

Operating Temperature: from -20 °C to +70 °C






**Additional Information**

Order No.	Article	
KV1283	KVS-E90- Pult-Track-PS/2-Ger	PS/2 interface, deutsches layout
KV1309	KVS-E90- Pult-Track-PS/2-US	PS/2 interface, US Layout
KV1312	KVS-E90- Pult-Track-Edel-PS/2-Ger	PS/2 interface, US Layout
KV1311	KVS-E90- Pult-Track-Edel-PS/2-US	PS/2 interface, US Layout

**Accessories**

Order No.	Article	
ZS2159	Wangen	

**Links**

Click!	Titel
	<b>KVS-E90 Table-top Version</b> The ergonomically designed stainless steel keyboard in a table-top housing.
	<b>KVS-E90 Front Track</b> Rugged keyboard made of stainless steel with integrated trackball for front panel mounting.
	<b>KVS-E90 Front Touch</b> Rugged keyboard made of stainless steel with integrated touchpad for front panel mounting.
	<b>KVS-105 Rear Trackball</b> Rugged keyboard made of stainless steel with integrated trackball for back panel mounting.
	<b>KVS-E90-Rear Touch</b> Rugged keyboard made of stainless steel with integrated touchpad for back panel mounting.

[sales@tastaturen.com](mailto:sales@tastaturen.com) Telefon: (0 81 42) 66 95 8-0 Fax: (0 81 42) 66 95 8-11